

8 Harvey Court, Caboolture South



**8% LEASEBACK
GUARANTEE**

Lease income \$757 per week
24-month term with
12 x 1 monthly options

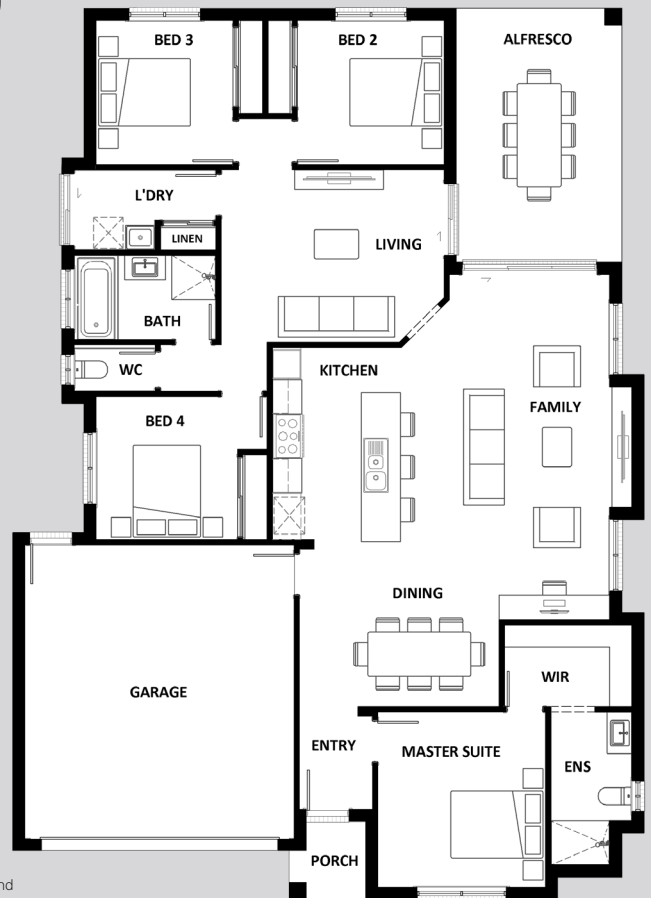
\$491,950*



MARCOOLA 209

House: 208.96m² Land: 450m²

- ✓ 2590mm high ceiling
- ✓ 20mm stone benchtops throughout
- ✓ Exposed aggregate driveway
- ✓ Ducted air conditioning
- ✓ Full fencing and landscaping
- ✓ Security system
- ✓ Irrigation watering system



*Display home list price includes gas, electricity and water for the life of the leaseback, but excludes council rates, land tax, and stamp duty. All prices and calculations are correct at the time of publication and Hotondo Homes reserves the right to alter pricing and terms without notice and accept or decline any offer. Display home price list does not include furniture and audio visual equipment unless listed above. For full list of inclusions, contact the Hotondo Homes team. Rental return calculated as a percentage of the purchase price as per annum and paid monthly for the life of the lease. Various lease periods available. Display home inclusions and terms may vary based on build locations. Signage and fencing will be in place during the leaseback period, however will be removed prior to settlement. Photos are for illustrative purposes only.

☎ 03 9559 5000 @ homes@hotondo.com.au

 **Hotondo Homes**